

# Anisoptera

## Dragonfly Nymph

Native to Maine

Freshwater  
Ponds, Lakes, Rivers, and Streams

### Larval Form

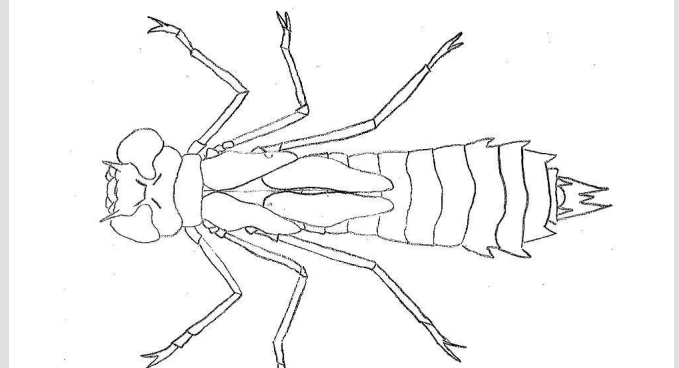


flickr user brewbrooks



Look for a short and chunky aquatic insect with wing pads and six legs located near the heads. Dragonfly nymphs appear armored and have rounded abdomens.

### Larva Illustration



R. Martin



Look for an insect that moves rapidly by pushing water through the rear part of its body. Dragonfly nymphs have extendable jaws and large eyes that help them catch prey.

### Variations and Details

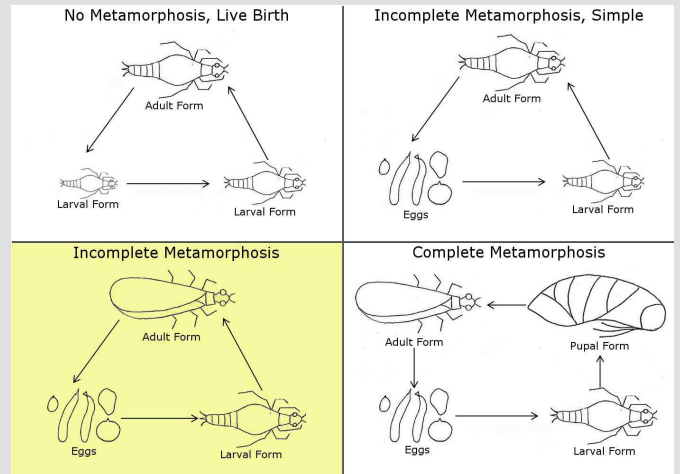


GMRI, Old Orchard Beach Student, flickr cyanocorax



Some dragonfly nymph species have short squat bodies and very small heads and others have long bodies and larger heads. Dragonfly nymphs range in size from 1.5 - 4.5 cm.

### Life Cycle Diagram



### Adult Form



flickr user ComputerHotline



Like nymphs, different adult dragonfly species can have a variety of appearances. Dragonflies have an elongated body, two transparent pairs of wings, and multifaceted eyes.

### Similar Species

Dragonflies are similar to damselflies. A dragonfly nymph's head tends to be narrower than its wide abdomen. The head of damselfly nymphs tends to be wider than its narrow body. Adult dragonflies hold their wings to the sides when they're resting. Damselflies hold their wings together behind them.

### Fun Fact

In some parts of the world dragonflies are a food source, eaten either as adults or larvae. In Indonesia they are fried in oil and considered a delicacy.

Moderately Tolerant of Pollution



Gulf of Maine  
Research Institute



[www.vitalsignsme.org](http://www.vitalsignsme.org)

Researched and created by Rebecca Martin

Help us improve this species card! Contact us with your updates.